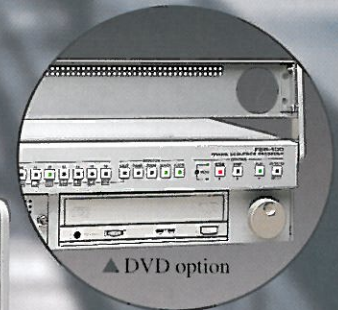
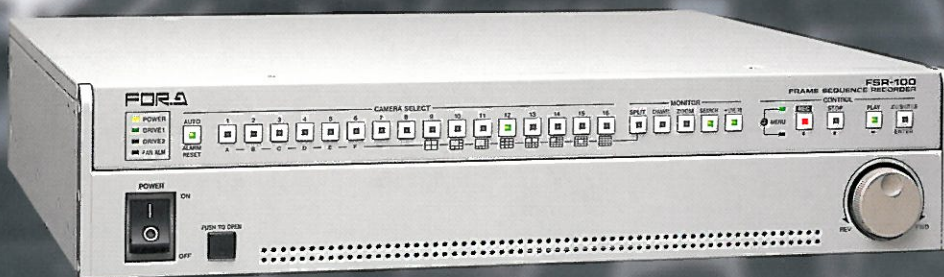


## Frame Sequence Recorder

# FSR-100



**T**he FSR-100 combines 16 Channel-multiplexer and digital disk recording in one conveniently sized package... Supports standardly-requested multiplexer functions such as an independent clock for split picture renewal timing, ID title generation per camera, date/time stamping, spot out, alarm response and optional motion detector plus advanced functions obtained by using HD drive such as random access to recorded material (Time/Date or Alarm event), and data transition via optional LAN. Moreover, the FSR-100 has a triplex function which enables independent Record and Playback functions and a simultaneous display of Playback and Live pictures in split mode on the same monitor. Simultaneous Recording/Playback function on timelaps mode allows the FSR-100 to make back-up recording onto DVD and/or to transfer the requested picture data via LAN while continuously recording onto internal HD Disk. An excellent addition to multi-camera security or observation systems in factories, banks, educational facilities, and airports among others.

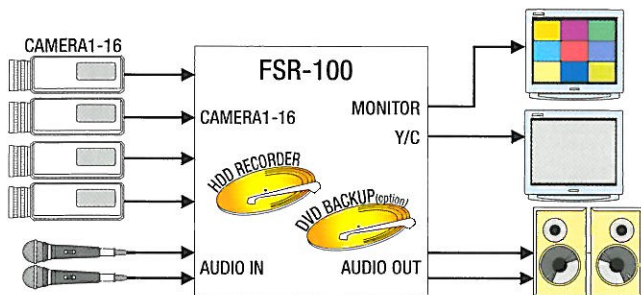
## Features

- ◆ Accepts asynchronous composite color or B/W video (loopthrough available).
- ◆ Switching noise free sequential camera switcher designed-in.
- ◆ Sequence time range; 1-30 seconds.
- ◆ Observe current live video and playback previously recorded video on same monitor.
- ◆ Record and playback simultaneously on timelaps mode, loop play mode available for both.
- ◆ Over voice audio record function for adding verbal comments.
- ◆ Camera title, time & date, and counter generators (w/memory backup).
- ◆ Configure with alarm devices to home to cameras with alarm video.
- ◆ Security password lockout of operational control possible to ensure against tampering.
- ◆ Alarm event log can store up to 100 entries.
- ◆ Auto record start-up at power ON feature.
- ◆ Record to hard drive memory or DVD (drive option required).
- ◆ Configure internal HD drive with external drives to maximize recording time.
- ◆ Motion J-PEG recording, selectable field compression ratio (1/6, 1/10, 1/20, 1/40).
- ◆ Random access and rapidly playback recorded material.
- ◆ Variable or jog search video, retrieve by count, or freeze to still.
- ◆ Backup record specified HD drive material to DVD for file or review use.
- ◆ RS-232C interface to control operations via computer command.
- ◆ LAN network control connection capability optional available.
- ◆ Motion detection card option. (Adds alarm capability all channels.)

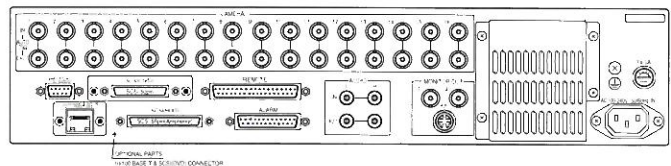
## Specifications

Television Standard	NTSC (525/60) or PAL (625/50) selectable.	Record Mode	Real-time mode: 60 fields/sec., Time-lapse mode: Selectable as 1 field/0.1sec, 0.2sec, 0.5sec, 1sec, 2sec, 4sec, or 8sec.
Video Inputs	Color or B/W composite, 1.0 Vp-p, 75Ω (auto terminated) or loopthrough, 16 ea., BNC	Record Performance	Sequential, one-shot (1-20 frames), or pre-alarm (1sec-10 minutes)
Monitor Output	Composite (2 ea.) or Y/C (1ea.), 1.0Vp-p, 75Ω	Data Access	Nonlinear, access alarm occurrence video via date/date or count
Audio Input	-60dBs (mic input), -10dBs (line input), unbalanced RCA jack	Camera Switchover	(Selectable as one below during record) Full screen Auto sequence between single inputs or manually select Split Display Auto sequence on all of the split displays Alarm Auto switch camera to full screen display upon alarm input
Audio Output	-10dBs, unbalanced RCA jack, low impedance, 2 ea. mono (1 ea. stereo)	Alarm Log	Up to 100 events max., 10 per page/10 memory pages total
Camera Title	Up to 16 alphanumeric characters per camera input	Battery Backup	Time, character settings, setup parameters, and alarm input data maintained for approx. 2 years with AC power OFF
Time Displays	3 different informational modes: Time Year-date-month, hour-minute-second, Address Hour-minute-second and SCSI ID, Remaining Time Available hard drive memory as percentage open	Dimensions	424 (W) x 88 (H) x 375 (D) mm
Time Reference	Internal crystal oscillator, accuracy +/- 90 sec/month at 25°C	Weight	Approx. 8.0kg.
Playback Display	Full screen or split display selectable (4/6/8/9/10/13/16-split patterns)	Options	DVD drive unit (for record to DVD), LAN interface (picture transmission/remote control), Sensor unit (for alarm input use)
Playback Mode	Normal, search and still (Search jog or variable selectable)		
Record Compression	Motion J-PEG, selectable 1/6, 1/10, 1/20 and 1/40 field compression ratio		

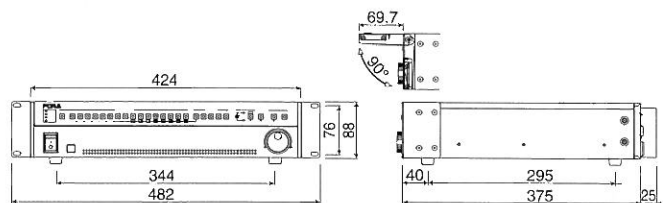
## System Diagram



## Rear Panel



## External Dimension



## FOR-A COMPANY LTD.

Head Office : 3-1-7 Ebisu, Shibuya-ku, Tokyo 150-0013, Japan  
**FOR-A UK Limited** : Heritage House, 21 Inner Park Rd., London SW19 6ED, UK  
**FOR-A Italia S.r.l.** : Viale Europa 50 20093, Cologno Monzese (MI), Milan, Italy  
**FOR-A America Head Office** : 2400 N.E. Waldo Road, Gainesville, FL 32609, U.S.A.  
**FOR-A Los Angeles Office**: 11125 Knott Ave., Cypress, CA 90630, U.S.A.  
**FOR-A Corporation of Canada** : 425 Queen St. W. #210, Toronto, Ontario M5V 2A5, Canada  
**FOR-A Beijing Office** : Rm 1802, Tower 1, Henderson Ctr., 18 Jianguomennei Ave., Beijing, China

## Homepage: <http://www.for-a.co.jp/>

+81 (0)3-3446-3936, Fax : +81 (0)3-3446-1470  
+44 (0)181-788-7664, Fax : +44 (0)181-788-7435  
+39 02-254-3635/6, Fax : +39 02-254-0477  
+1 352-371-1505, Fax : +1 352-378-5320  
+1 714-894-3311, Fax : +1 714-894-5399  
+1 416-977-0343, Fax : +1 416-977-0657  
+86 (0)10-6518-3865, Fax : +86 (0)10-6518-3866