

Display and Measurement

VP-380
IV-550
IV-560
IV-570



Beautifully simple and economical solutions to teleconferencing, school or corporate training, medical briefings, or scientific analysis support.

Descriptions

● VP-380 Video Pointer

Easily configures with most video based systems. (Composite input standard, Y/C optional.) Allows user to superimpose standard directional arrows or emphasis patterns to draw attention to or highlight specific items in the output video image. Easy joystick positioning of arrows/patterns, flashing indication function, black or white display, and superimpose on/off. Provides dependable, basic illustration support.

● IV-550 Video Micro Scaler

Highly accurate video scaler designed for precise results during most scientific measurement situations, including microscopic analysis applications. 2 vertical, 1 horizontal scaling line, all independently positionable. Calibration function to compensation for magnification level, five measurement unit selections (and off), image contour enhancement, and max. resolution of up to 1999. Measurement data displayed at front panel and superimposed on image. Can be used with VTG timer units for extended time evaluations.

● IV-560 Video Measuring Gauge

Accurately determines distance between two observed points in images, as well as their size and position relationships. Radius-based measurement function using superimposed crosshairs or patterns, results displayed on image are XY coordinates (H/V address), radius, and item code. Easy trackball positioning control. RS-232C for computer control, or printer, data storage device connection.

● IV-570 Crossline Generator

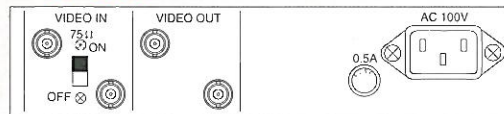
Superimposes scale reference crosslines on composite video for use in comparing dimensions and positions of objects within an image. Fixed or independently variable positioning mode. Choice of scaled or dotted crosslines and superimpose off. (Fixed mode locks crossline positions. Fine adjustment of line positioning possible.) Crossline display grey scalable from white to black for max. contrast.

Specifications

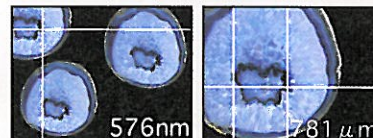
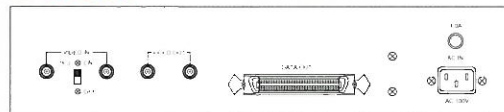
	VP-380	IV-550	IV-560	IV-570
Television Standard	NTSC or PAL			
Video Input	Composite 1.0 Vp-p, 1 input, 75 Ω, or lothrough, BNC (Y/C input option for VP-380)			
Video Output	Composite 1.0 Vp-p, 2 outputs, 75 Ω, BNC			Composite 1.0 Vp-p, 1 output, 75 Ω, BNC
Display	Selectable indications ↑ ↓ → ← ○ □ + □	Scale lines, max. resolution 1999±1, measure in nm, μm, mm, cm, m	H&V crosshairs: patterns: + ⊕ ○ □ ▢ □ / . resolution: NTSC: 640 (H) × 480 (V), PAL: 749 (H) × 562 (V)	Straight scale lines or dotted lines
Data Output	N/A	BCD	RS-232C	N/A
Temperature	10~40°C (50~104°F)			
Power/Consumption	100/117/220/240VAC, 50/60Hz; Approx. 5VA	100/117/220/240VAC, 50/60Hz; Approx. 16VA	100/117/220/240VAC, 50/60Hz; Approx. 26VA	100/117/220/240VAC, 50/60Hz; Approx. 6VA
Dimensions/ Weight	215 (W) × 44.5 (H) × 250 (D) mm; Approx. 2kg	430 (W) × 88 (H) × 350 (D) mm; Approx. 6kg	MU: 430 (W) × 88 (H) × 350 (D) mm; Approx. 5kg OU: 171 (W) × 66 (H) × 189 (D) mm; Approx. 2kg	215 (W) × 44 (H) × 250 (D) mm; Approx. 2kg

Appearance

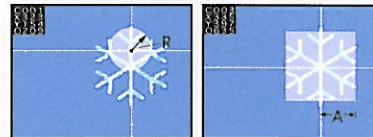
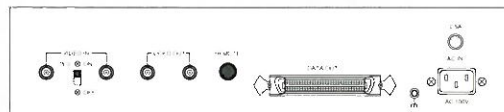
▼ VP-380 Rear Panel



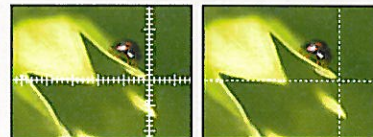
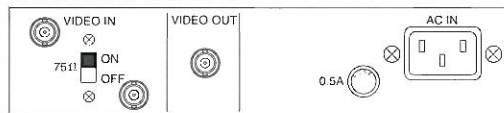
▼ IV-550 Rear Panel



▼ IV-560 MU Rear Panel



▼ IV-570 Rear Panel



FOR-A COMPANY LTD.

Head Office : 4-11-21 Minami Azabu, Minato-ku, Tokyo 106, Japan

FOR-A (UK) LIMITED : Heritage House, 21 Inner Park Rd., London SW19 6ED, UK

FOR-A (ITALY) LIMITED : Viale Europa 50 20093, Cologno Monzese (MI), Milan, Italy

FOR-A CORPORATION OF AMERICA : 11095 Knott Ave., Cypress, CA 90630, U.S.A.

FOR-A CORPORATION OF CANADA : 191 John St., Toronto, Ontario M5T 1X3, Canada

Homepage: <http://www.sphere.ad.jp/for-a/>

(03) 3446-3936,

(0181) 788-7664,

(02) 254-3635/6,

(714) 894-3311,

(416) 977-0343,

Fax : (03) 3446-4454

Fax : (0181) 788-7435

Fax : (02) 254-0477

Fax : (714) 894-5399

Fax : (416) 977-0657